



## Installation Instructions

Product: EradiSpeed+ Front and Rear

Instruction Part Number: 6000271

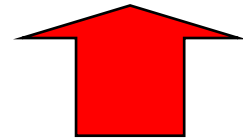
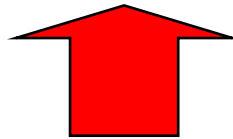
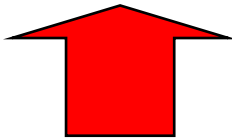
Revision Date: 12 September 2022

Vehicle Make: Ford

Model: Mustang

Year(s): 2005+

***ATTENTION: Read this before going further! Returns will not be accepted for ANY installed PART or ASSEMBLY. Use great care to prevent cosmetic damage when performing wheel fit check. If a product must be returned, please contact Baer Customer Service for an RMA Number. Always read and follow the notices below before attempting installation***



### Notices – Read and Follow BEFORE ATTEMPTING INSTALLATION

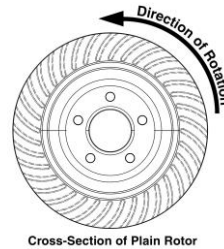
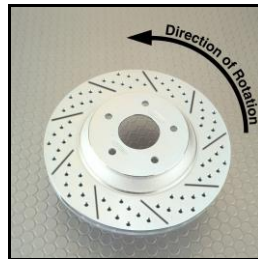
- All installations require proper safety procedures and protective eyewear.
- All installations assume basic mechanical skill and a factory service manual for the vehicle on which the installation is to be performed.
- All references to the “left” side of the vehicle correlate to the driver’s side of the vehicle.
- Any installation requiring you to remove a wheel or gain access under the vehicle requires use of jack stands appropriate to the weight of the vehicle. In all cases, jack stands rated for a minimum of 2-tons is recommended.
- A selection of hand tools sufficient to engage in the installation of these products is assumed and is the responsibility of the installer to have in his/her possession prior to beginning this installation. All installations, which require removal of hydraulic hoses and/or bleeding of the brakes, require appropriate fitting/line wrenches, safety catch can, and protective eyewear. Other than these items, if unique or special tools are required, they will be stated appropriately in the installation step.
- ALWAYS CONFIRM WHEEL FIT BEFORE BEGINNING INSTALLATION OF ANY BRAKE SYSTEM OR “UPSIZED” ROTOR UPGRADE! In addition to checking wheel fitment of this system with the wheel fitment template (available online at [www.Baer.com](http://www.Baer.com)), always place the actual corner assembly or a combination of the caliper assembly on the rotor, and into the actual wheel with great care to prevent cosmetic damage. This procedure will reconfirm proper clearance between the caliper and the wheel before proceeding with the actual installation.

## ***BAER Your Complete Performance Brake Supplier!***

- Returns will **not** be accepted for systems that have been partially or completely installed. **Use extreme care when checking wheel fitment to prevent any cosmetic damage of brake components.** Wheel fitment can also be checked before installation using a wheel fitment template supplied at [www.Baer.com](http://www.Baer.com).



- When installing new Baer rotors, be sure to follow the direction of rotation indicated on the rotor hat area with either an arrow, or an "L" for left, or an "R" for right, or both. "L" or left always indicates the driver's side of US spec vehicles. Images shown are "L" left rotors:



- A proper professional wheel alignment is required for any system requiring replacement of the front spindles, or tie rod ends. Follow factory prescribed procedures and specifications unless otherwise indicated.
- If anything is unclear or the parts require force to install at any point during the installation, stop immediately and consult directly with Baer Technical Staff. Please have these instructions, as well as the part number of the component (part numbers are machined into the brackets) that is/are proving difficult to install, as well as the make, model, and year (date of vehicle production is preferred) of your vehicle available when you call. Baer's Technical Staff is available from 8:30a.m. - 5:00p.m. Mountain Standard Time (Arizona does not observe Daylight Savings Time) by phone: (602)-233-1411 Monday through Friday.

## **INSTALLATION:**

### **2005+ FRONT:**

#### **Removal of Factory Brake Components**

1. Unbolt and remove the caliper assembly from the spindle. Remove the caliper anchor from the caliper body and keep the bolts aside, these will be used to re-secure the caliper to the new caliper anchor supplied with this system. Suspend the caliper body in the wheel well, ensure that it is supported. **DO NOT** suspend the caliper from the fluid hose as it may damage the hose.
2. Clean the caliper mounting surfaces on the spindle to allow the new intermediate bracket to seat properly.

#### **Intermediate Bracket Installation**

3. Install the intermediate bracket to the inboard side of the spindle using the supplied M12 bolts and washers. Torque each bolt to 85 ft-lbs. to secure the intermediate bracket to the knuckle.

#### **Caliper Anchor Installation**

4. Install the supplied caliper anchor to your original caliper body using the bolts removed in step 1. Torque the bolts to the manufacturer specifications.

#### **Brake Rotor Installation**

5. Install the correct side rotor and secure with three lug nuts and washers to prevent scratching the rotor hat.

#### **Caliper Installation**

6. Install the original pads (or new pads if purchased) into the caliper assembly and slide the assembly over the rotor. Secure the caliper assembly to the intermediate bracket with the supplied M12 bolts and washers. Torque each bolt to 85 ft-lbs.
7. Repeat steps 1-6 for the other side of the vehicle and recheck all attachment points and fittings.

**Note: This system will place the pad 0.085" above the rotor. This is to clear the castings on both the caliper and the spindle.**

Refer to Bleeding, Pad Bedding and Rotor Seasoning Procedures contained on a separate sheet, or on [www.baer.com](http://www.baer.com). For service components and replacement parts contact your Baer Brake Systems Tech Representative at 602-233-1411, or visit: <https://baer.com/System-Parts-Tools/>.

# ***BAER Your Complete Performance Brake Supplier!***

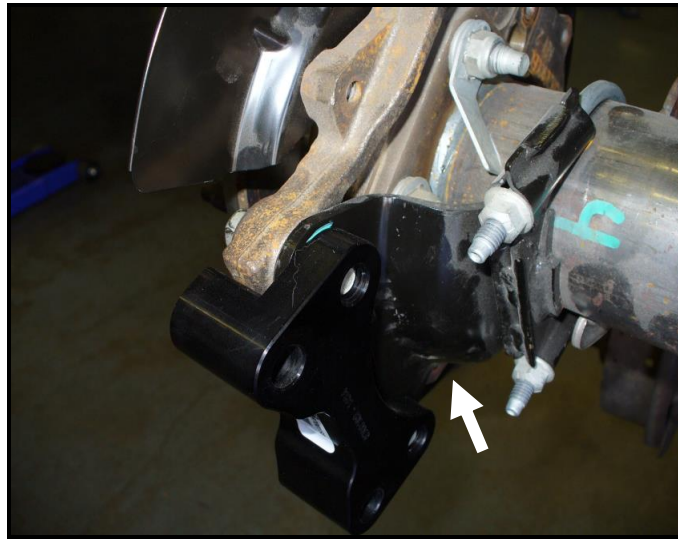
## **2005+ REAR:**

### **Removal of Factory Brake Components**

1. Unbolt and remove the original caliper but do not disconnect the fluid hose or park cable. Suspend the caliper inside of the wheel tub with a bungee cord or similar hanger. Retain the caliper bolts for reuse later.

**Note:** If your Mustang contains an anti-groan brace located between the housing tube and the caliper bracket, it must remain in place. The anti-groan brace is necessary for the Baer EradiSpeed system and will ensure proper alignment of the new components. See photo below for reference:

**For vehicles NOT equipped with an anti-groan brace, place the provided 0.200" spacers between the intermediate bracket and mounting tabs of the axle housing flange. The provided 0.200" spacers are necessary for the Baer EradiSpeed system and will ensure proper alignment of the new components.**



**View of driver's side with intermediate bracket installed with anti-groan brace**

**Arrow points to anti-groan brace**

### **Intermediate Bracket Installation**

2. Install the intermediate bracket to the inboard side of the original caliper mount using the original caliper bolts. The engraved part number will face inboard, and the bracket will overhang the original caliper mounts. Torque each bolt to 85 ft-lbs. The above photo shows proper assembly of the intermediate bracket and anti-groan brace. **Use the provided 0.200" spacers in place of the anti-groan brace for vehicles not equipped with an anti-groan brace.**

### **Brake Rotor Installation**

3. Install the correct side rotor and retain with three lug nuts and washers to prevent scratching the rotor hat.

### **Caliper Installation**

4. Install the correct side caliper to the intermediate bracket using the supplied M12 bolts and washers. Torque each bolt to 85 ft-lbs.
5. Repeat steps 1-4 for the other side of the vehicle and recheck all attachment points and fittings.

Refer to Bleeding, Pad Bedding and Rotor Seasoning Procedures contained on a separate sheet, or on [www.baer.com](http://www.baer.com). For service components and replacement parts contact your Baer Brake Systems Tech Representative at 602-233-1411, or visit: <https://baer.com/System-Parts-Tools/>.

## ***BAER Your Complete Performance Brake Supplier!***

### **2013 GT500 Rear:**

#### **Removal of Factory Brake Components**

1. Unbolt and remove the original caliper but do not disconnect the fluid hose or park cable. Suspend the caliper inside of the wheel tub with a bungee cord or similar hanger. **DO NOT** suspend the caliper from the fluid hose. Retain the caliper bolts for reuse later.
2. Remove the factory rotor from the axle.

**Note:** To accommodate the new rotors, base brackets must first be installed onto each of the axle housing ends. The axles must first be removed to complete this step. Also, if your Mustang contains an anti-groan brace located between the housing tube and the caliper bracket, it must remain in place. The anti-groan brace is necessary for the Baer EradiSpeed system and will ensure proper alignment of the new components. See photo below for reference:

**For vehicles NOT equipped with an anti-groan brace, place the provided 0.200" spacers between the intermediate bracket and mounting tabs of the axle tube flange. The provided 0.200" spacers are necessary for the Baer EradiSpeed system and will ensure proper alignment of the new components.**



**View of driver's side with intermediate bracket installed with anti-groan brace**

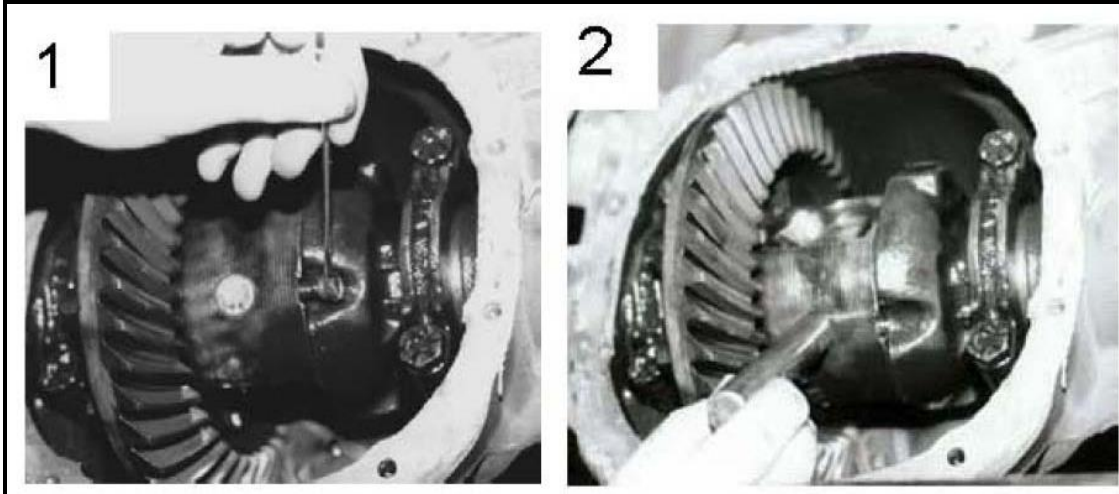
**Arrow points to anti-groan brace**

#### **Axle Removal**

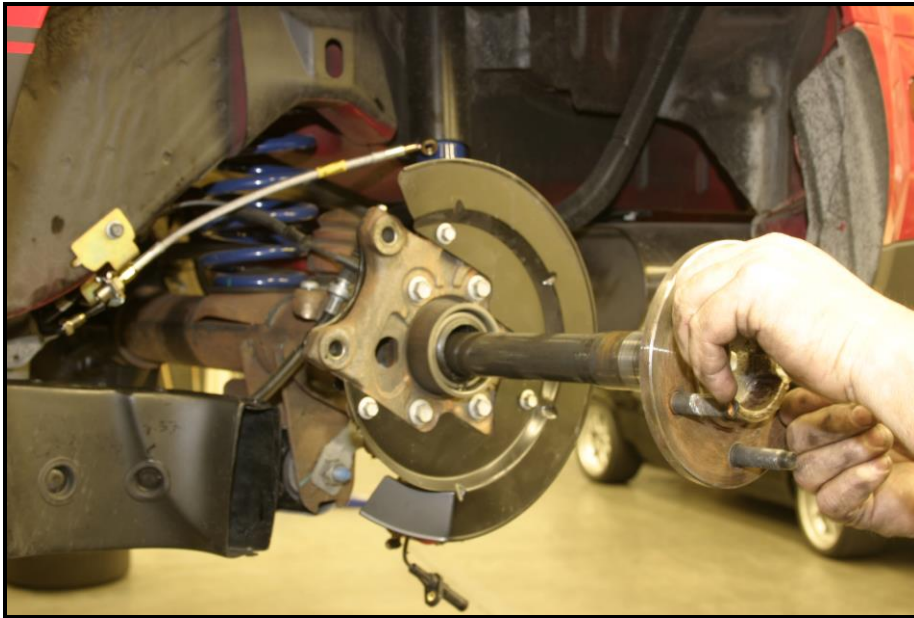
3. Remove the differential cover and drain fluid. Following Ford Service procedures, remove the axles: Using a 5/16" 6-point box wrench, remove the differential pin retainer bolt and slide the pin out of the carrier. See Photos 1 and 2, on the following page.



## ***BAER Your Complete Performance Brake Supplier!***



4. Push the axles inboard to remove the c-clips, then pull the axles out of the housing, using care not to damage the bearings or seals. Inspect the seals and bearings, replace if necessary. See photo below for reference.



**Remove the axle and inspect the bearings and seals.**

### **Base Bracket Installation**

5. Once the axles are removed, the correct side OEM base brackets (supplied with your system) can be installed onto each of the axle housing ends. The brackets will require use of the original bolt hardware (M10x35mm bolts) to bolt up to the axle housings. Follow vehicle manufacturer specs for proper torque values of the fasteners. See photos of brackets on continued page:

## ***BAER Your Complete Performance Brake Supplier!***



**Left and Right OEM base brackets shown, respectively**

### **Axle Re-Installation**

6. Reinstall the axle, following Ford Service procedures. Reinstall the differential cover, applying proper sealant to the gasket and refill differential with appropriate gear oil / lubricant.

### **Intermediate Bracket Installation**

7. Install the intermediate bracket to the inboard side of the OEM base bracket using the original caliper bolts. The engraved part number will face inboard, and the bracket will overhang the OEM base bracket. Torque each bolt to 85 ft-lbs. **Use the provided 0.200" spacers in place of the anti-groan brace for vehicles not equipped with an anti-groan brace. For vehicles equipped with an anti-groan brace, it must remain in place between the base and intermediate bracket during installation.**

### **Brake Rotor Installation**

8. Install the correct side rotor and retain with three lug nuts and washers to prevent scratching the rotor hat.

### **Caliper Installation**

9. Install the correct side caliper using the supplied M12 bolts and washers. Torque each bolt to 85 ft-lbs.
10. Repeat steps 1-9 for the other side of the vehicle and recheck all attachment points and fittings.

Refer to Bleeding, Pad Bedding and Rotor Seasoning Procedures contained on a separate sheet, or on [www.baer.com](http://www.baer.com). For service components and replacement parts contact your Baer Brake Systems Tech Representative at 602-233-1411, or visit: <https://baer.com/System-Parts-Tools/>.