



INSTALLATION INSTRUCTIONS

PART NUMBER: 6000728

VEHICLE MAKE: CHEVROLET

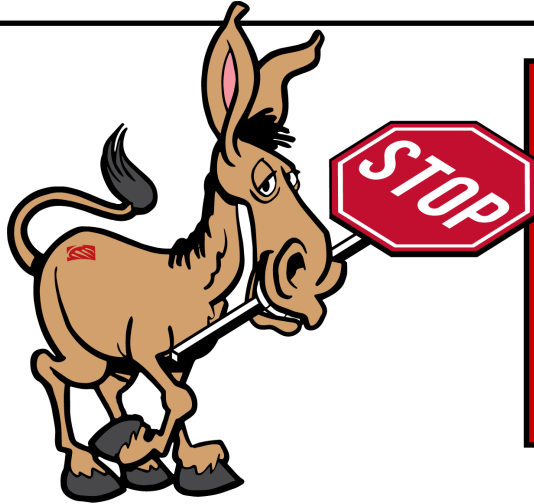
MODEL: C10 AND GMC C15 TRUCKS WITH DSE C10 FRONT DROP SPINDLE KIT

YEARS: 1973-1987

PRODUCT: PRO+ 13"/14" FRONT

REVISION: REVISION C

REVISION DATE: 21 FEBRUARY, 2024



READ BEFORE CONTINUING!

Returns will not be accepted for ANY installed PART or ASSEMBLY. Use great care in preventing cosmetic damage when performing wheel fit check. If a product must be returned, please contact Baer customer service for an RMA number.

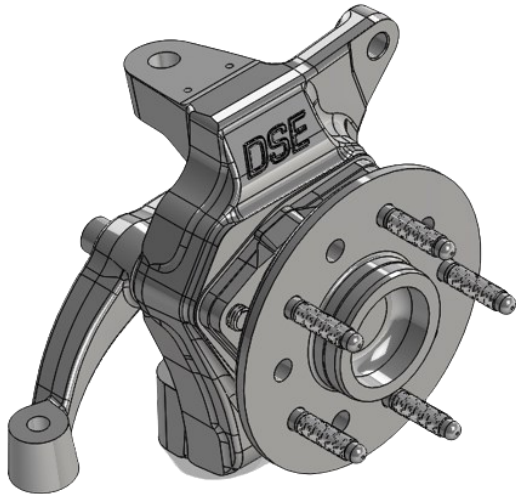
The recipient of this product indemnifies Baer Inc. for all liabilities or losses incurred in connection with the recipient modifying or altering Baer Inc. product during installation.

Notices – Read and Follow BEFORE ATTEMPTING INSTALLATION

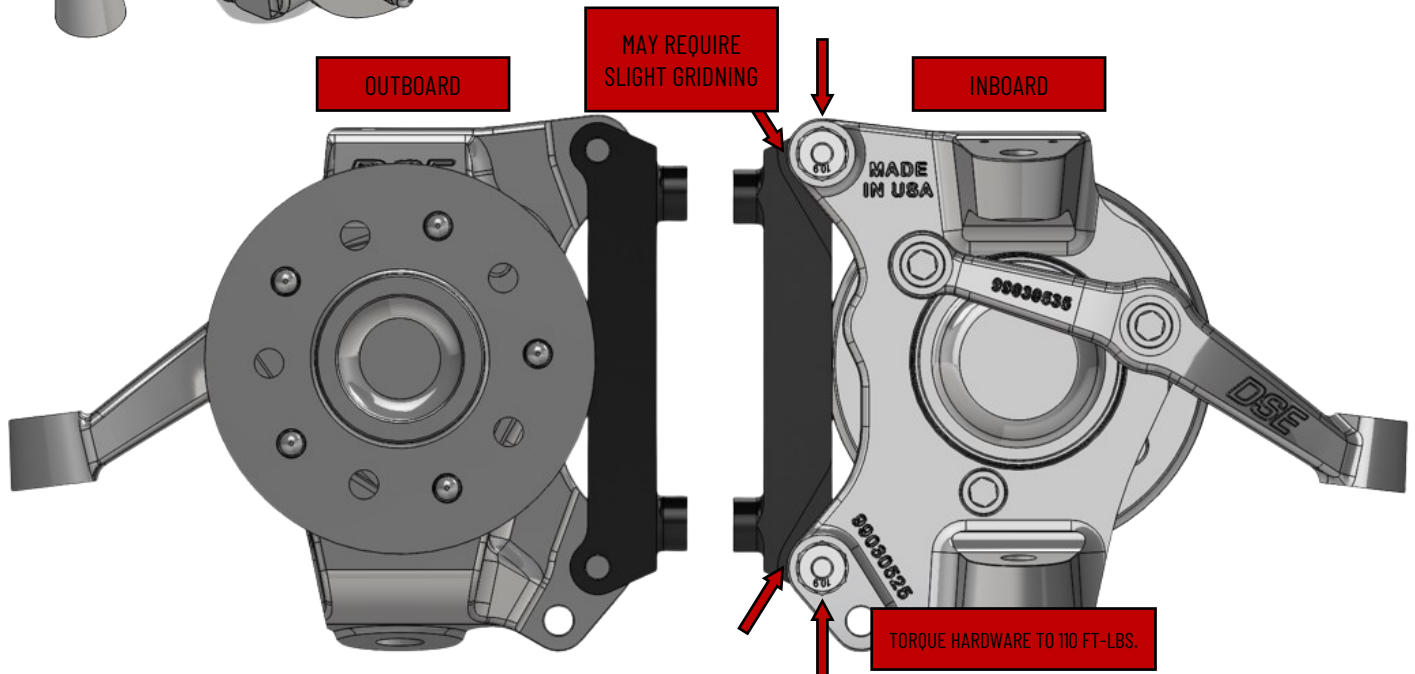
- All installations require proper safety procedures and protective eyewear.
- All installations assume basic mechanical skill and a factory service manual for the vehicle on which the installation is to be performed.
- All references to the "left" side of the vehicle correlate to the driver's side of the vehicle.
- **Any installation requiring you to remove a wheel or gain access under the vehicle requires use of jack stands appropriate to the weight of the vehicle. In all cases, jack stands rated for a minimum of 2-tons is recommended.**
- A selection of hand tools sufficient to engage in the installation of these products is assumed and is the responsibility of the installer to have in his/her possession prior to beginning this installation. All installations, which require removal of hydraulic hoses and/or bleeding of the brakes, require appropriate fitting/line wrenches, safety catch can, and protective eyewear. Other than these items, if unique or special tools are required, they will be stated appropriately in the installation step.
- ALWAYS CONFIRM WHEEL FITMENT BEFORE BEGINNING INSTALLATION OF ANY BRAKE SYSTEM OR "UPSIZED" ROTOR UPGRADE! In addition to checking wheel fitment of this system with the wheel fitment template (available online at www.Baer.com), always place the actual corner assembly or a combination of the caliper assembly on the rotor, and into the actual wheel with great care to prevent cosmetic damage. This procedure will reconfirm proper clearance between the caliper and the wheel before proceeding with the actual installation.
- Returns will **not** be accepted for systems that have been partially or completely installed. **Use extreme care when checking wheel fitment to prevent any cosmetic damage of brake components.** Wheel fitment should be verified before installation using a wheel fitment template supplied at www.Baer.com
- When installing new Baer rotors, be sure to follow the direction of rotation indicated on the rotor hat area with either an arrow, an "L" for left, or an "R" for right, or both. "L" always indicates the rotor for the driver side of US spec vehicles. Follow the rotor installation and rotation instructions included in the promo pack (P/N 6020502) included with your system when installing rotors. **Failure to properly install rotors will not allow for proper function of the brake system and will cause heat related fatigue and failure.**
- *****IMPORTANT PLEASE READ: A professional wheel alignment is required for any system requiring the replacement of the front spindles or tie rod ends. Follow factory prescribed procedures and specifications unless otherwise indicated.**



- Note: Baer recommends taking photos of the brake system before disassembly and during each step of the disassembly process. Photos may allow technical support to better assist given any necessary troubleshooting.**
- If anything becomes unclear or any parts require force to install at any point during the installation, stop immediately and consult directly with Baer technical staff. Please have these instructions and the part number of the components that is/are proving difficult to install. Please provide technical staff with the make, model, and year (date of vehicle production is preferred) of your vehicle. Baer's technical staff is available by phone (602.233.1411) or email (ContactUs@Baer.com) from 8:30 AM - 5:00 PM MST (Mountain Standard Time) Monday - Friday (Arizona does not observe Daylight Savings Time).

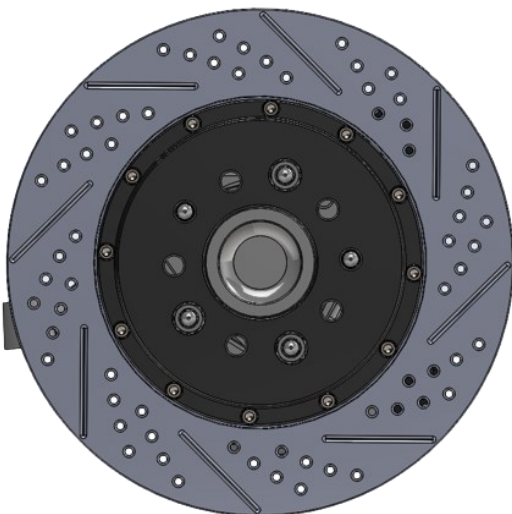


1. To begin the installation, ensure all brake related components have been removed from the spindle.



2. Install the intermediate bracket (P/N 6600912) to the outboard face of the mounting ears on the spindle with the supplied M14-2.0 bolts and washers. The bracket mounts with the flat portion facing outboard, toward the hub. Torque the hardware to 110 ft-lbs. to secure the intermediate bracket to the spindle.

NOTE: 13" SYSTEMS MAY REQUIRE SLIGHT GRINDING OF THE FLASHING SURROUNDING THE MOUNTING EARS ON THE KNUCKLE TO ALLOW FOR PROPER MOUNTING OF THE INTERMEDIATE BRACKET. REFER TO THE FIGURES ABOVE

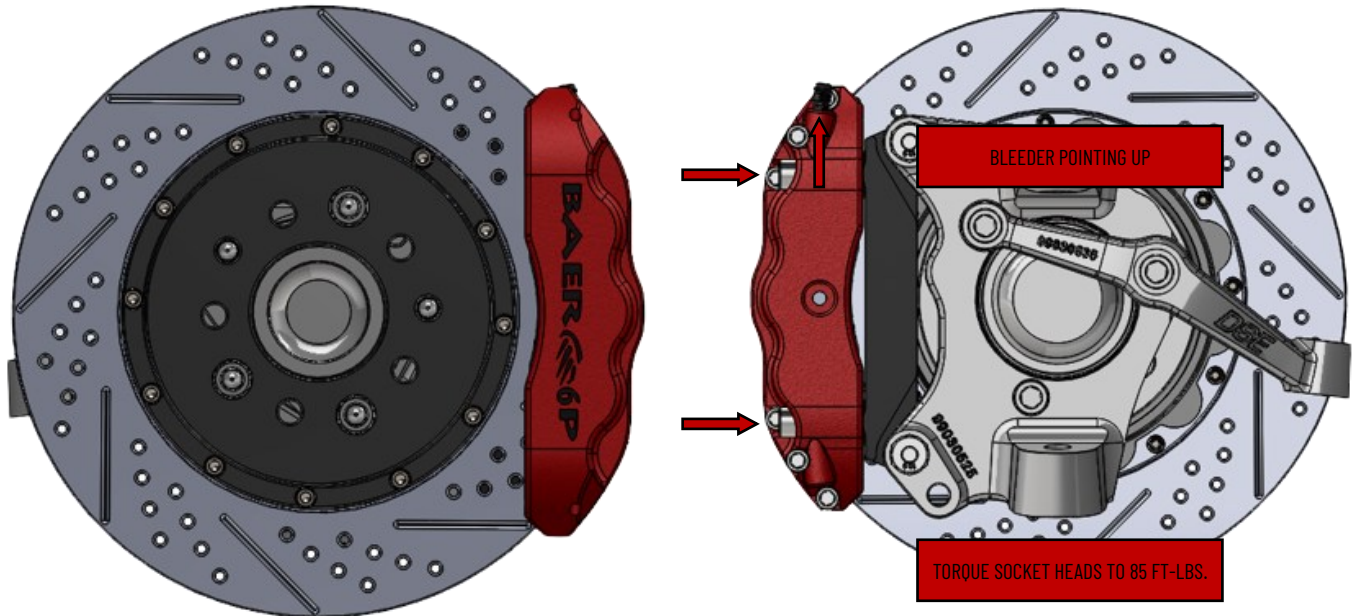


3. Install the correct side rotor, referring to the Rotor Direction and Installation instructions included in the promo packet supplied with this system. Temporarily secure the rotor to the hub with three lug nuts and washers.

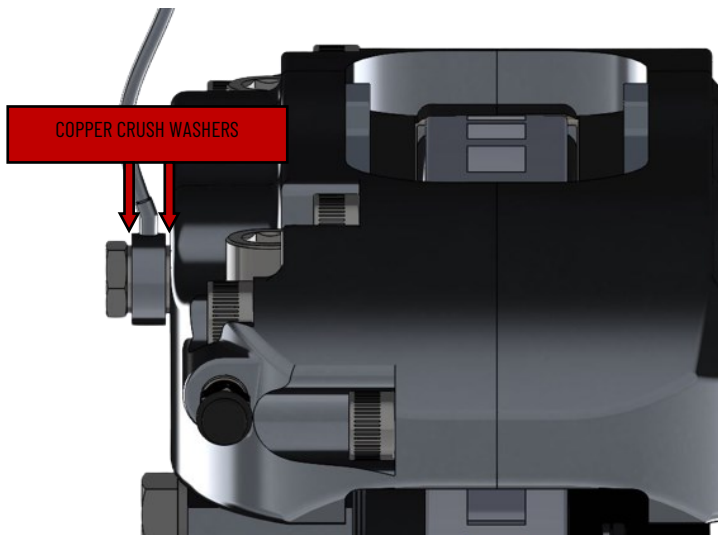
These must be removed before reinstalling the wheels.

OUTBOARD

INBOARD



4. Install the correct side caliper with the bleeder screw pointing up to the intermediate bracket using the supplied M12-1.75 socket heads. Torque the socket heads to 85 ft-lbs. to secure the caliper to the intermediate bracket. **NOTE: FOR 13" SYSTEMS, INSTALL AT LEAST TWO (2) OF THE SUPPLIED .015" RADIAL SHIMS TO EACH OF THE BOSSES ON THE INTERMEDIATE BRACKET BEFORE INSTALLING THE CALIPER TO ALLOW THE CALIPER TO CLEAR THE SPINDLE MOUNTING EARS.**



5. Connect the new supplied stainless-steel braided brake hose to the caliper with the supplied banjo bolt and new copper crush washers. Install one copper crush washer to each side of the banjo fitting on the hose (2 per caliper). Finger-tighten the banjo bolt.

6. Position the brake hose to avoid interference with the wheel and suspension components through their entire range of motion. Connect the opposite end of the hose with the adapter fitting to the hardline and install the hose lock

7. Tighten the adapter fitting at the hardline and the banjo bolt connected to the caliper to 15-20 ft-lbs. Repeat steps 5 & 6 for the other side of the vehicle and re-check all attachment points and fittings.

ENSURE ALL FASTENERS HAVE BEEN TORQUED TO THEIR SPECIFIED VALUES BEFORE OPERATING THE VEHICLE.

Baer recommends using "Baer Street/Race DOT4 Brake Fluid" for all Baer brake systems. The link/QR to order the recommended brake fluid is below. Refer to Bleeding, Pad Bedding, and Rotor Seasoning Procedures contained within the promo pack (P/N 6020502) provided with this system. For service components and replacement parts, contact a Baer Systems Technical Representative or visit the link/QR below.

BRAKE FLUID

<https://baer.com/Brake-Fluid/>



SERVICE PARTS

<https://baer.com/System-Parts-Tools/>

